

INTERNAL GUIDE TO ANSWERING YOUR CLIENT'S FAQ

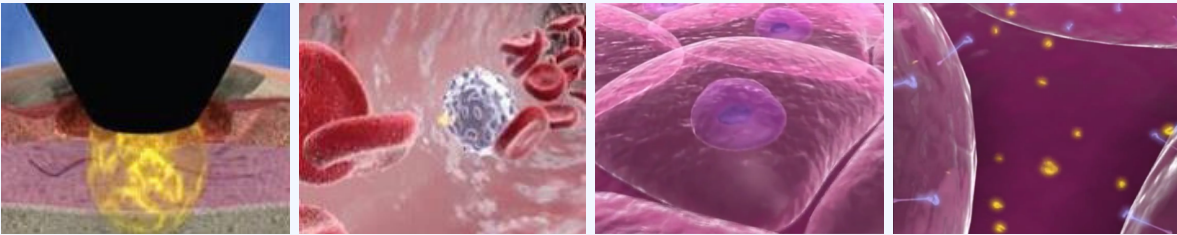
WHAT IS A SHOCK WAVE? *SOUND ENERGY. NOT AN ELECTRIC SHOCK!*

A non-invasive therapy that has been used FDA approved on the human medicine side for 30+ years. It utilizes high energy sound waves to re-initiate the body's healing process.

FDA approved to treat: • *Lithotripsy, Plantar Fasciitis, Tennis Elbow*

WHAT DOES IT DO? / HOW DOES IT WORK?

When the sound waves enter the body and reach the target area, the energy is released as a "shock wave". This energy deposit causes the cells in the body to react as if there is a fresh injury, sending them into healing overdrive.



HOW DOES IT HEAL? *D.S.C.I.I.R ("Dan Scoops Cold Ice In Ireland's Restaurant")*

- Decreases Inflammation
- Speeds Healing
- Causes new blood vessel formation
- Increases Blood supply which leads to tissue regeneration in tendons & ligaments
- Improves Fiber alignment in tendon repair so injuries heal more correctly, & decreases the risk of re-injury.
- Increases Cellular Bone Production for faster bone healing
- Recruits stem cells to treated tissues.

WHY SHOCK WAVE THERAPY?

- Non-Invasive therapy
- Proven to treat 20+ indications
- Few side effects post treatment
- Only 1-3 treatments required for complete healing
- Each treatment takes less than 5 minutes.
- Long term results
- Treatments covered by equine insurance

TREATMENT SUCCESS RATES

89%

CHRONIC BACK PAIN

81%

NAVIGULAR SYNDROME

50%

Hind-Limb Proximal
Suspensory Injury

60%

Faster Healing of
Collateral Ligament Injury

PROPULSE UNIT TIPS

GENERAL TREATMENT TIPS:

- Don't ever treat an injury acutely, give the body 7-10 days to heal itself before starting your first treatment.
- The more ultrasound gel used, the better.
- **Standard Dose = E6, 1000 pulses, 360 pulses/minute**
- Backs/SI's = 2000 pulses (1000 on each side) per Tx.
- Navicular = 2000 pulses total (1000 over the frog + 1000 over the heel).
- **Treatment Rule of Thumb:**
 - Maintenance Indications* = 1 treatment as needed. -*Inuries* = 3 treatments spread 2-3 weeks apart.
- **Maintenance Indications = Chronic Pain/Backs/SI/Hocks/Navicular/OA**
- **Kissing Spines** = 3 Tx 3-4 weeks apart.
- Analgesic effect can last up to 2-3 days, be sure to keep the horse quiet during this time so they don't re-injure themselves.



TRODE TIPS

- Shake trode before each use
- Remove trode from device BEFORE unplugging.
- Wipe trode with LIGHTLY damp alcohol wipe to clean.
- Each trode has 50,000 pulses on it.
- Re-order a trode when 5,000 are remaining..
- Trode lifespan is shown on the home screen above the Manual/Preset Tabs + on the treatment screen in upper right hand corner.

Flic Button:

- Press Flic ONCE to sync upon start up
- Press ONCE to start/stop a Tx
- It does have a 2 second delay. Be Patient!
- Hold flic for 3 seconds to restart a treatment.
- Only One Flic button can be synced to the device at one time.

Trode Removal:

- Remove Trode BEFORE powering down.
- Trode will be stuck in device if powered down while still inserted.
- To remove, simply restart your device (unplug and plug back in). When you are back on the home screen you can remove trode.

Powering On:

- To Power On/Off Device: Unplug device.
- Power button on the front by the screen does NOT power down your device. Do Not Use (it's essentially useless).

Tx Settings:

- Energy level and pulse speed can be changed mid-treatment by pressing above or below your current setting level.
- A treatment will stop when dose is fulfilled.